



# Hep<sub>2</sub>O<sup>®</sup>

Hep<sub>2</sub>O<sup>®</sup>  
push-fit  
plumbing  
for total  
installed  
confidence

The professional flexible push-fit plumbing system for hot and cold water incorporating the high integrity grab wedge.



Hep<sub>2</sub>O<sup>®</sup> has evolved over 20 years to offer improved installation advantages, whilst maintaining proven long term performance benefits. Flexible pipe work and joint security are the key features of Hep<sub>2</sub>O<sup>®</sup>.

Pipe flexibility in conjunction with straight coils enables pipe to be cabled into position, with fewer joints, minimizing system costs.

The Hep<sub>2</sub>O<sup>®</sup> fitting incorporates a high integrity grab wedge and

robust pre-lubricated 'O' ring, offering the installer smoother pipe insertion and lower jointing forces.

The re-usable grab wedge gives reliable jointing even when the fitting has been dismantled and reassembled.

**Siam Green Power International Co., Ltd.**

1112/25 Sukhumvit Rd. Soi 48  
Prakanong, Klongtoey  
Bangkok 10110, Thailand

[www.SiamGPI.com](http://www.SiamGPI.com)  
[info@SiamGPI.com](mailto:info@SiamGPI.com)  
Phone 02 392 4926  
Fax 02 392 4927

Product Guide

## Product Guide

with the BiTite<sup>®</sup>  
grab wedge  
inside



# Hep<sub>2</sub>O<sup>®</sup>

## System benefits

*What does Hep<sub>2</sub>O flexible push-fit plumbing mean to the professional installer?*

**Installation** Hep<sub>2</sub>O<sup>®</sup> introduces a new flexibility for the professional to exploit during installation.



Cabling Ability



Less Jointing



Low Wastage



Measure and Cut In-situ



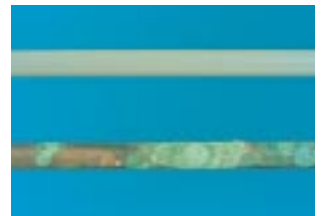
High Resistance to Impact



Rotatable Fittings



Solder Free



Corrosion Free

**Performance** Once installed Hep<sub>2</sub>O<sup>®</sup> offers considerable benefits over tradition rigid systems.



No Scale Build-up



No Burst Pipes



Quieter



Cool to Touch

## Key Facts

- Hep<sub>2</sub>O<sup>®</sup> should always be installed in accordance with AS3500 National Plumbing Code.
- Hep<sub>2</sub>O<sup>®</sup> does not corrode or cause "blue water" in soft water areas or scale up in hard water areas.
- Hep<sub>2</sub>O<sup>®</sup> minimises water hammer and provides a quiet plumbing system.
- Hep<sub>2</sub>O<sup>®</sup> is manufactured to AS 2642 Parts 2 & 3 Polybutylene Pipe Systems.
- Hep<sub>2</sub>O<sup>®</sup> must be shielded or painted to protect from UV light when used externally for extended periods.
- Hep<sub>2</sub>O<sup>®</sup> is a full bore plumbing system complying with Table 1 of AS3500 Part 1.2.
- Hep<sub>2</sub>O<sup>®</sup> should not be used when exposed to petroleum solvents at any time.
- Hep<sub>2</sub>O<sup>®</sup> should not be used in continuously circulating hot water loops above 60°C without consultation.

# System assembly & modification

*In skilled hands the flexible Hep2O plumbing system guarantees a professional installation*

## Attachment

**Joining Procedure** - whichever type of fitting is used, the same type of joining procedure should be used. All fittings are pre-lubricated.



Use only purpose designed pipe cutters. Cut the pipe at one of the insertion marks. Ensure the pipe end is free from burrs.



Insert a **Hep2O**® support sleeve into the pipe end.



Push the pipe firmly into the fitting. A secure joint has been made when the end of the cap has reached the next insertion mark on the pipe.



Tug back on the pipe to ensure the grab wedge engages correctly.

## Detachment Re-using a demountable fitting



Unscrew the retaining cap and pull the pipe clear of the fitting.



Remove the 'O' ring and wedge support ring (if applicable) from the pipe.



Using the wedge remove tool, slide the **BiTite**® grab wedge from the pipe. Provided it is undamaged it can be re-used.



Re-assemble the fitting, inserting the 'O' ring, the wedge support ring (if applicable) and then the **BiTite**® grab wedge, with the flat face against the wedge support ring – replace the cap hand tight.

## Pressure Testing

AS3500 requires all installations be hydrostatically tested. For installations with **Hep2O**® the recommended test pressure is 1500kPa and should not be less than 30 minutes in accordance with AS3500. Care should be taken to disconnect any appliances or fittings that will not withstand, or will be damaged by testing at 1500kPa.

**Remember!** Pressure Testing is **NOT** a substitute for making sure the **Correct Insertion Depth** of the tube into the fitting using either the insertion marks or a pencil mark has been achieved.



## Alterations Blanking a fitting is easy with Hep2O®

### Demountable Hep2O®

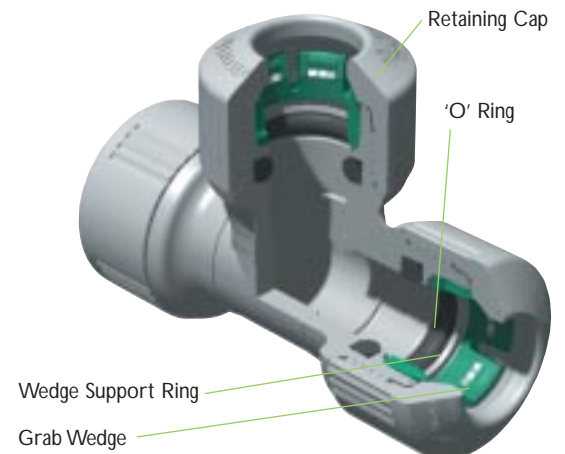
Remove the cap and **BiTite**® grab wedge from the fitting. Push the open end of the blanking peg into the 'O' ring. Replace the cap hand tight.

**Note:** Stainless steel blanking caps will not work correctly in **Hep2O**® fittings with **BiTite**® grab wedges inside.



### Removing the Blanking Peg

Remove the cap and blanking peg, re-insert the 'O' ring and wedge support ring (if applicable) - check the grab wedge is undamaged. Insert the grab wedge into the fitting with the flat face against the wedge support ring. Replace the cap hand tight.





### Pipe, Standard Coil

15mm - 100mtr Coil	HEPC100.15
18mm - 50mtr Coil	HEPC50.18
22mm - 50mtr Coil	HEPC50.22



### Pipe, Straight Coil

18mm - 25mtr Coil	HEPSC25.18
22mm - 25mtr Coil	HEPSC25.22



### Pipe, Straight Length

15mm - 5mtr Length	HEPL05.15
18mm - 5mtr Length	HEPL05.18
22mm - 5mtr Length	HEPL05.22
28mm - 5mtr Length	HEPL05.28



### Straight Connector

15mm x 15mm	HEP1.15
18mm x 18mm	HEP1.18
22mm x 22mm	HEP1.22
28mm x 28mm	HEP1.28



### Spigot Socket Reducer

18mm x 15mm	HEP2.18.15
22mm x 18mm	HEP2.22.18
28mm x 22mm	HEP2.28.22



### PB - Copper Connector

18mm PB x 15mm Cu	HEP3.18.15
(18mm PB x 15mm PB)	
22mm PB x 20mm Cu	HEP3.22.20



### 90° Elbow

15mm x 15mm	HEP5.15
18mm x 18mm	HEP5.18
22mm x 22mm	HEP5.22
28mm x 28mm	HEP5.28



### Equal Tee

15mm x 15mm x 15mm	HEP10.15
18mm x 18mm x 18mm	HEP10.18
22mm x 22mm x 22mm	HEP10.22
28mm x 28mm x 28mm	HEP10.28



### End Reduced Tee

22mm x 18mm x 22mm	HEP12.22.18
28mm x 22mm x 28mm	HEP12.28.22



### Centre Reduced Tee

22mm x 22mm x 18mm	HEP13.22.18
28mm x 28mm x 18mm	HEP13.28.18
28mm x 28mm x 22mm	HEP13.28.22



### Branch End Reduced Tee

22mm x 18mm x 18mm	HEP14.22.18
28mm x 22mm x 22mm	HEP14.28.22



### Female Wall Elbow

15mm x 1/2" BSP	HEP6.15
18mm x 1/2" BSP	HEP6.18
22mm x 3/4" BSP	HEP6.22



### Female Adaptor, Threaded

15mm x 1/2" BSP	HEP28.15
18mm x 1/2" BSP	HEP28.18
22mm x 3/4" BSP	HEP28.22
28mm x 1" BSP	HEP28.28



### Male Adaptor, Threaded

15mm x 1/2" BSP	HEP29.15
18mm x 1/2" BSP	HEP29.18
22mm x 3/4" BSP	HEP29.22
28mm x 1" BSP	HEP29.28



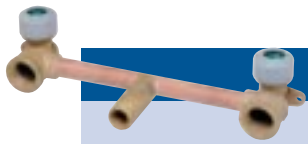
### Extended Wall Elbow

18mm x 1/2" BSP - 150mm	HEP95.18
18mm x 1/2" BSP - 85mm	HEP96.18



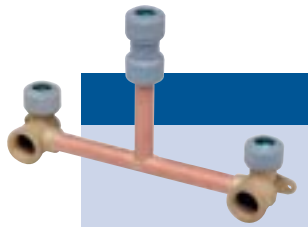
### Male Wall Elbow

15mm x 1/2" BSP	HEP99.15
18mm x 1/2" BSP	HEP99.18



### Inline Tap Assembly

200mm Centre	HEP87.18
300mm Centre	HEP88.18



### Shower Assembly (No Risers)

Top Entry, 150mm Ctr	HEP85.18T
Bottom Entry, 150mm Ctr	HEP85.18B
Top Entry, 200mm Ctr	HEP86.18T
Bottom Entry, 200mm Ctr	HEP86.18B



### BiTite Dismounting Tool

15mm	HEP79.15
18mm	HEP79.18
22mm	HEP79.22
28mm	HEP79.28



### BiTite Blanking Peg

15mm	HEP44.15
18mm	HEP44.18
22mm	HEP44.22
28mm	HEP46.28



### BiTite Grab Wedge

15mm	HEP46.15
18mm	HEP46.18
22mm	HEP46.22
28mm	HEP46.28



### BiTite O Ring

15mm	HEP51.15
18mm	HEP51.18
22mm	HEP51.22
28mm	HEP51.28



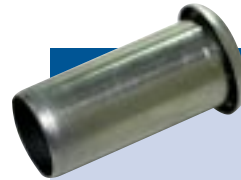
### BiTite Wedge Support Ring

18mm	HEP47.18
22mm	HEP47.22
28mm	HEP44.28



### Pipe Cutter & Blade

Pipe Cutter	HEP74
Cutter Blade	HEP75



### Support Sleeve

15mm	HEP60.15
18mm	HEP60.18
22mm	HEP60.22
28mm	HEP60.28



### Pipe Clip

15mm	PB65.15
18mm	PB65.18
22mm	PB65.22
28mm	PB65.28

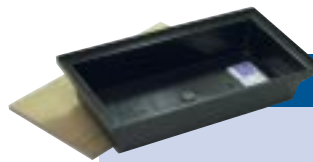
(Other clip configurations are available)



### Pipe in Pipe System

18mm in Conduit	HEPPIP18
22mm in Conduit	HEPPIP22

(Conduit Pipe available separately)



### Junction Box

Junction Box	HEP100
Junction Box Lid	HEP104



### Grab Ring (for use with original Hep<sub>2</sub>O only)

15mm	PB45.15
18mm	PB45.18
20mm Cu	PB45.20
22mm	PB45.22
28mm	PB45.28



### O Ring (for use with original Hep<sub>2</sub>O only)

15mm	PB50.15
18mm	PB50.18
20mm Cu	PB50.20
22mm	PB50.22
28mm	PB50.28



### Space Washers (for use with original Hep<sub>2</sub>O only)

15mm	PB55.15
18mm	PB55.18
20mm	PB55.22
28mm	PB55.28